



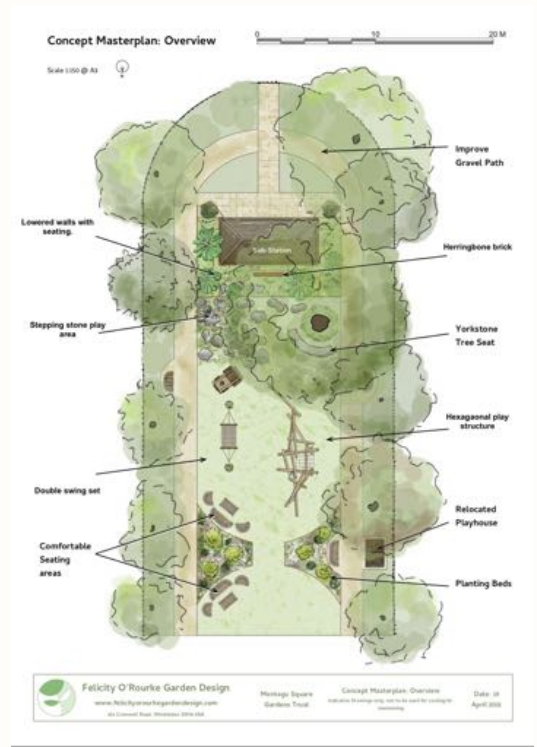
# GARDEN NEWS

The latest news and updates from the Montagu Square Garden Trust

## THE SOUTH GARDEN PROJECT STAGE 1

This project started with the need to repair the wall adjacent to the play area. As we did more research, it became clear that this was an opportunity to revitalise the South Garden. Stage 1 of the project will involve repairing the damaged wall and adding portland stone bench seating on it. New play equipment will include a swing set and a climbing frame. The train and wendy house will be restored, and both will be moved to new settings.

Ground works will include installing a new safety surface that will include Technix matting and Nordic Lawn. This will transform the look of the play area. We will add automatic irrigation to help keep the grass in good condition and will also add new lighting. We were working to get this project started at the end of September but we have heard from the playground equipment suppliers that the earliest dates they can guarantee delivery will be by March 2022. We have therefore had to reschedule our start date until then.



**SAVE THE DATE**

*Last Days of Summer  
Resident's Party*

22nd September

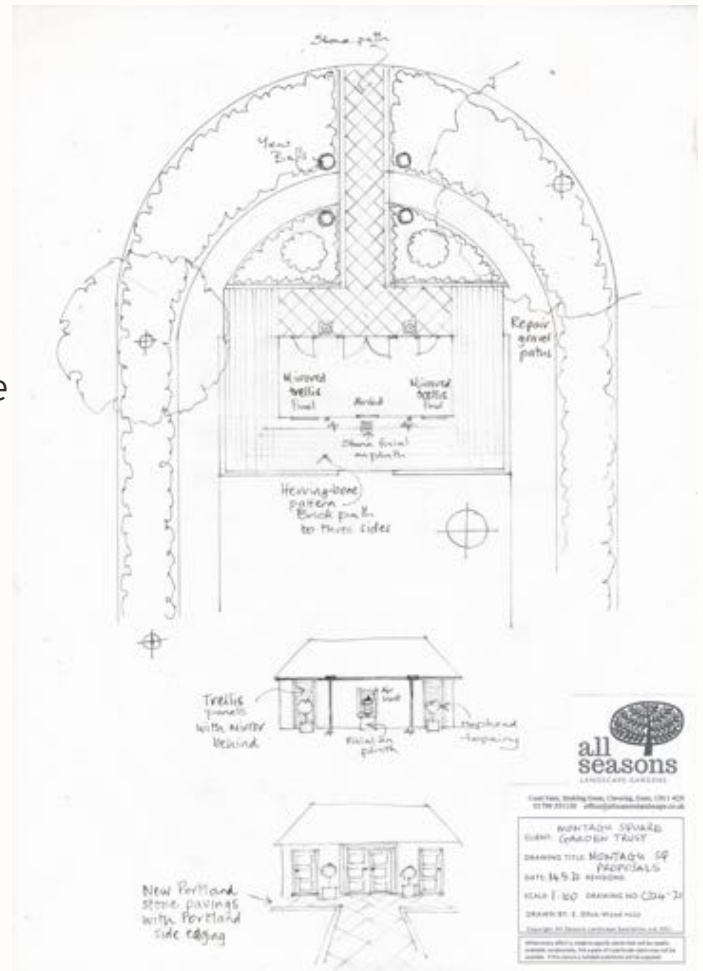
# THE SOUTH GARDEN PROJECT STAGE2

This stage will focus on the area around the substation

The Portman estate are kindly liaising on our behalf with UKPN (UK Power Networks) to improve the condition of the substation and the paved area around it. The exact costs are not yet known but a rough estimate.....

The work we would like to do would transform the environment at the south end of the garden. These works include:

- Lowering the other walls around the substation and adding Portland stone seating to them
- Herringbone brick paving on 3 sides around the substation



Felicity O'Rourke Garden Design  
 www.felicityorourkegardendesign.com  
 104 Cromwell Road, Winterton, W10 9JA  
 Montage Square Gardens Trust  
 Visual Impressions of Montage Square Gardens Facing South  
 Indicative Drawings only, not to be used for costing/procurement  
 Date: 29 April 2021

- Dress the substation facade to create a pavilion with a central urn or sculpture as a focal point with planters either side.
- Repave the entrance way with Portland stone slabs and edges.
- Upgrade the gravel paths around the perimeter of the substation
- Renovate the south lawn.

YOU'RE INVITED TO A



*Last days of Summer Party*

SEPTEMBER 20TH, 2021 | 6:00 PM | THE GARDEN